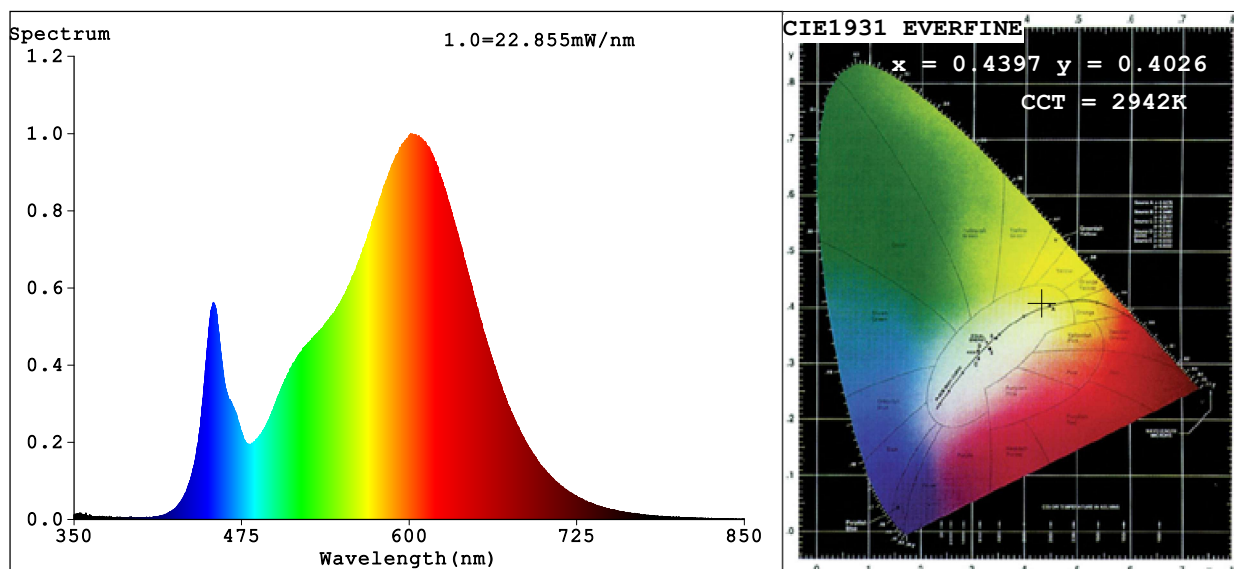


Spectrum Test Report



Color Parameters:

Chromaticity Coordinate: $x=0.4397$ $y=0.4026$ $u'=0.2530$ $v'=0.5212$

CCT=2942K (Duv=-0.0009) Dominant WL:Ld =583.4nm Purity=52.8%

Ratio:R=23.4% G=73.9% B=2.6%; Peak WL:Lp=601.2nm FWHM=118.7nm

Render Index:Ra=82.3 CRI=77.1 TM30:Rf=82 Rg=95

R1 =81 R2 =92 R3 =95 R4 =80 R5 =82 R6 =91 R7 =81

R8 =57 R9 =5 R10=83 R11=79 R12=72 R13=84 R14=98 R15=73

Photo Parameters:

Flux = 1081 lm Eff. : 111.62 lm/W Fe = 3.274 W

Electrical parameters:

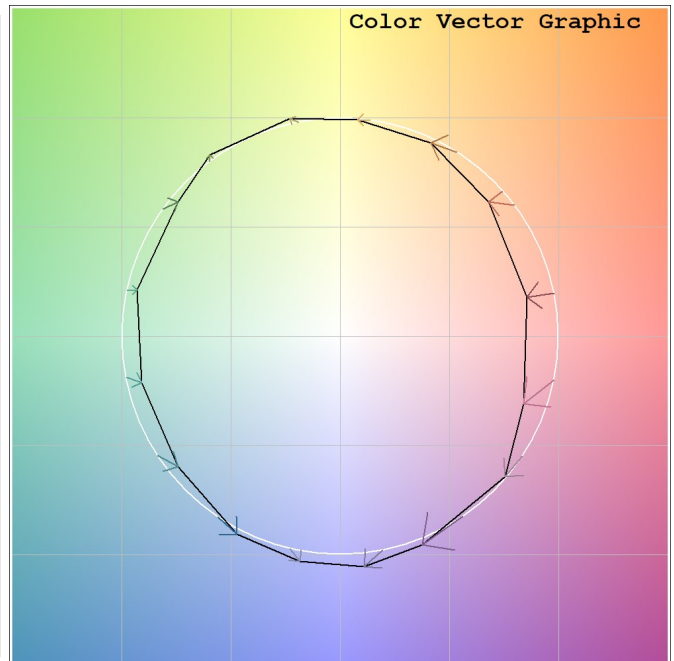
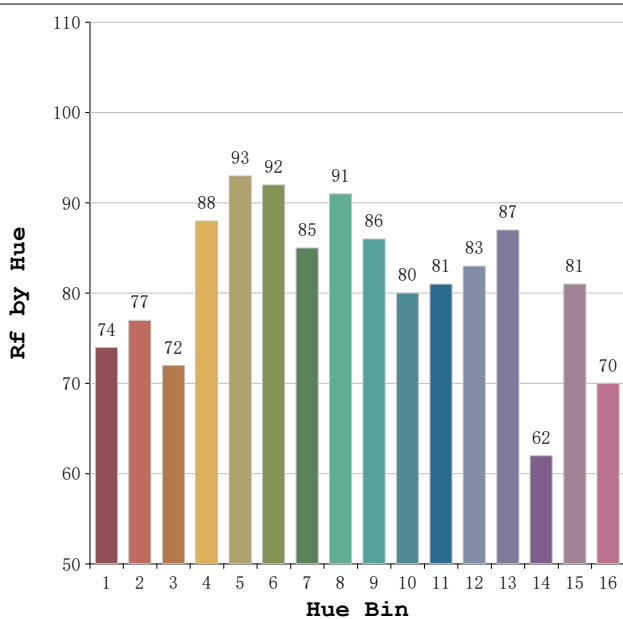
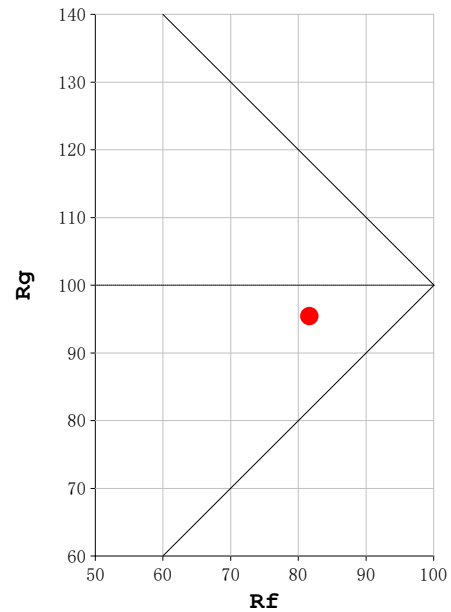
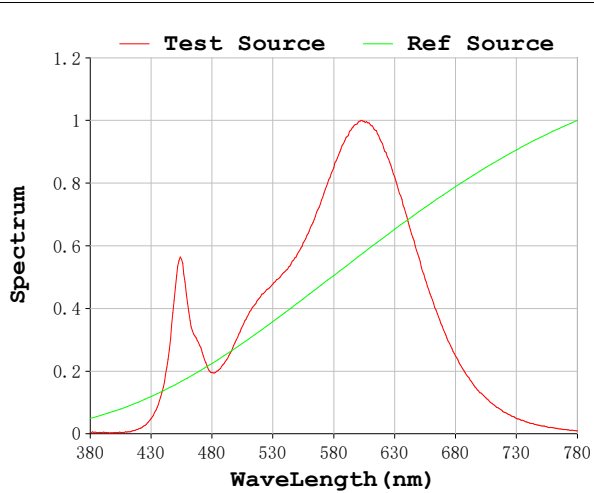
V = 23.998 V I = 0.4034 A P = 9.681 W PF = 1.000

Status: Integral T = 1090 ms Ip = 49449 (75%)

Model:Ecoled Roll to roll
Tester:Sergio Carneros
Temperature:20Deg
Manufacturer:Luz Negra

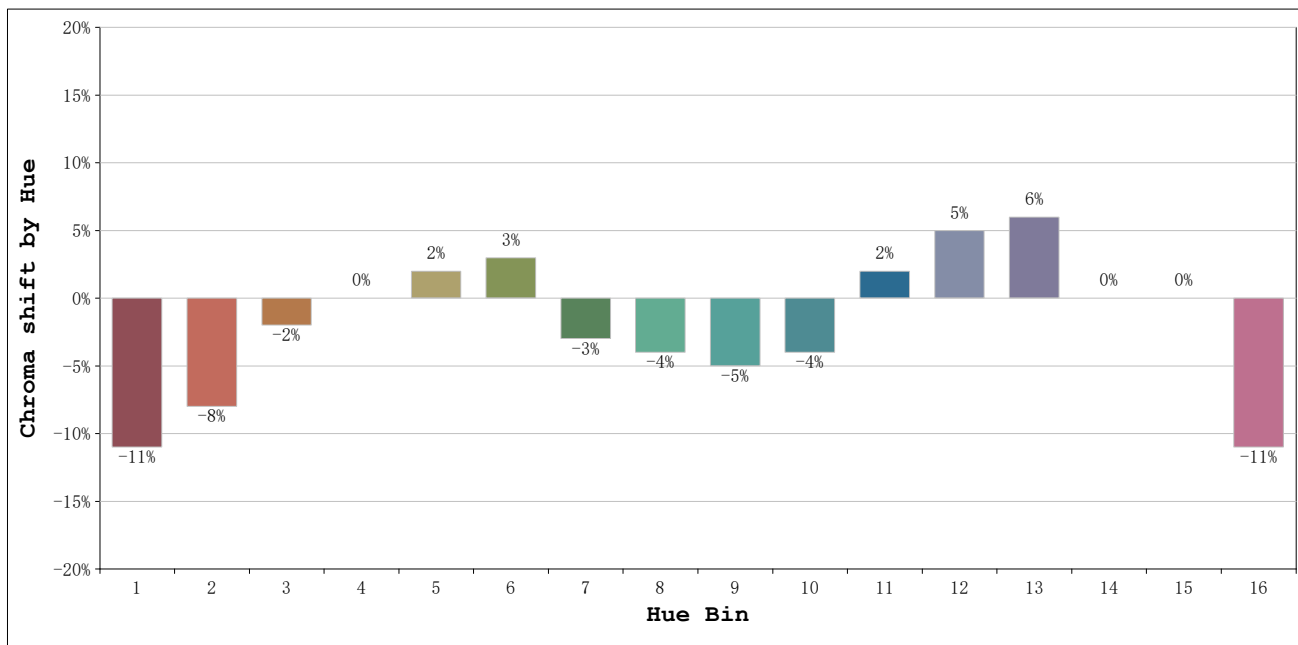
Number: 31.257
Date:2025-06-16 16:12:42
Humidity:50%
Remarks:100cm de tira flexible

Rf: 82 **CCT: 2942 K** **u': 0.2530**
Rg: 95 **Duv: -0.0009** **v': 0.5212**



Model:Ecoled Roll to roll
 Tester:Sergio Carneros
 Temperature:20Deg
 Manufacturer:Luz Negra

Number: 31.257
 Date:2025-06-16 16:12:42
 Humidity:50%
 Remarks:100cm de tira flexible



Hue Bin	Hue Angle	Rf	Graphic shift(%)	
			Chroma	Hue
1	0.0° - 22.5°	74	-11	1
2	22.5° - 45.0°	77	-8	8
3	45.0° - 67.5°	72	-2	12
4	67.5° - 90.0°	88	0	6
5	90.0° - 112.5°	93	2	3
6	112.5° - 135.0°	92	3	-1
7	135.0° - 157.5°	85	-3	-6
8	157.5° - 180.0°	91	-4	0
9	180.0° - 202.5°	86	-5	4
10	202.5° - 225.0°	80	-4	10
11	225.0° - 247.5°	81	2	12
12	247.5° - 270.0°	83	5	6
13	270.0° - 292.5°	87	6	-9
14	292.5° - 315.0°	62	0	-22
15	315.0° - 337.5°	81	0	-11
16	337.5° - 360.0°	70	-11	-12

Model:Ecoled Roll to roll
 Tester:Sergio Carneros
 Temperature:20Deg
 Manufacturer:Luz Negra

Number: 31.257
 Date:2025-06-16 16:12:42
 Humidity:50%
 Remarks:100cm de tira flexible